

DEVELOPMENT

MDA

AGENCY

ORGANIZATION OF WOODWORKING PRODUCTION



ABOUT THE PROJECT

IT IS PLANNED TO BUILD BUILDINGS AND STRUCTURES FOR ORGANIZING WOODWORKING PRODUCTION, AUXILIARY AND STORAGE FACILITIES, PURCHASE AND INSTALLATION OF MODERN TECHNOLOGICAL EQUIPMENT FOR THE PRODUCTION OF MOLDED PRODUCTS.

PROJECT OBJECTIVE:

Production of high-quality sawn timber: floorboards, euro lining, plinths, platbands, beams, edged boards, etc., sales of finished products in the domestic and foreign markets.

Location of the project: The Republic of Belarus, Mogilev region, Krasnopolsky district, village Sidorovka.

Investment: 2 000 000 USD

Contacts:

Krasnopolsk District Executive Committee

Leninskaya st, 1, Krasnopolye, Mogilev region, 213561

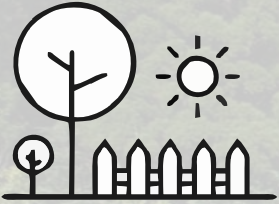
Tel. +375 2238 79965; Tel. +375 2238 79948

E-mail: priem_krasrik@mail.ru



ABOUT THE PROJECT

ADVANTAGES OF THE PROJECT



FOR THE CONSTRUCTION OF THE ENTERPRISE THERE IS A FREE LAND PLOT WITH ASPHALT SITE WITH A TOTAL AREA OF 3.8 HECTARES



THERE ARE ENGINEERING AND TRANSPORT INFRASTRUCTURE NEAR THE SITE: DISTANCE TO THE GAS PIPELINE - 250 METERS; POWER SUPPLY - 100 METERS, ROAD R-140 SLAVGOROD - KRASNOPOLYE - 100 METERS.



PREFERENTIAL TREATMENT: 💰

INVESTMENT AGREEMENT:



✓ provision of a land plot without an auction

✓ exemption from payment of customs duties and VAT on the import of technological equipment

SMALL TOWNS AND COUNTRYSIDE:

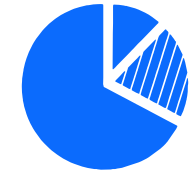


✓ exemption from import duties

✓ exemption from paying state fees for issuing a license

✓ exemption from income tax, property tax, income tax

SOUTH-EAST DISTRICT OF MOGILEV REGION:



✓ exemption from targeted fees and tax incentives

✓ reimbursement up to 20% of the cost of capital costs for an investment project

✓ financing the costs of creating engineering and transport infrastructure required for the implementation of investment projects at the expense of the budget



KRASNOPOLSKY DISTRICT

ABOUT DISTRICT



9,7 thsd
people



1223 sq.km
area of
the district

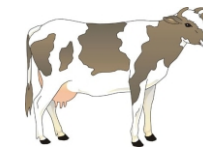
22,9 thsd HA
agricultural land
area

12,6 thsd HA
arable land
area

The economic development of the district based on agricultural production. the main directions of which are:



DIARY
PRODUCTION



CATTLE
RAISING



FORAGE
HARVESTING





Joint Stock Company
"MOGILEV REGION DEVELOPMENT AGENCY"

marr.by

PROSPECTIVE INVESTMENT PROJECTS OF MOGILEV REGION



+375 222 74 61 91
+375 44 582 28 18



agencymogilev@ya.ru



Belarus, Mogilev,
boulevard Yubileyniy, 21

THE AGENCY IS READY TO HELP FOREIGN INVESTORS INTERESTED UN DOING BUSINESS IN BELARUS

- Presentation information on investment opportunities, preferential regimes and benefits, industries, legislation
- Provision of current information on investment projects
- Selection and provision of information on options for land and premises
- Search for potential partners for the implementation of the investment project; organization of meetings, negotiations with potential partners to establish

and support for the investor during the negotiations

- Organization of visits to Mogilev Region (development of a program of stay, assistance in obtaining a visa)
- Representation the interests of the investor in negotiations with government officials on the implementation of investment projects, as well as on improving business practices in Mogilev Region



+375 222 74 61 91
+375 44 582 28 18



agencymogilev@ya.ru



Belarus, Mogilev,
boulevard Yubileyniy, 21

➤ The following major benefits related to the implementation of the project are provided in connection with the conclusion of the investment agreement



- VAT deduction
- Exemption from VAT
- Land plots are granted for rent without auction

INVESTMENT AGREEMENT

➤ The following benefits related to the implementation of the project are provided in connection with the location of the land plot



- 0% income tax VAT
- Exemption from custom import duties
- Exemption from payment of the state fee for issuing a license

SMALL TOWNS AND RURAL AREAS

➤ The following benefits granted to the investors for implementation of the project in the South-Eastern region of Mogilev Region



- 10% income tax
- 24% pension insurance
- Financing the costs of creating engineering and transport infrastructure

SOUTH-EASTERN REGION OF MOGILEV REGION



+375 222 74 61 91
+375 44 582 28 18



agencymogilev@ya.ru



Belarus, Mogilev,
boulevard Yubileyniy, 21



Joint Stock Company
"MOGILEV REGION DEVELOPMENT AGENCY"

marr.by

WELCOME TO MOGILEV REGION!



+375 222 74 61 91
+375 44 582 28 18



agencymogilev@ya.ru



Belarus, Mogilev,
boulevard Yubileyniy, 21